

## Detailed Project Description—Ottauquechee River Trail



The Ottauquechee River Trail (ORT) is a 2.8-mile walking trail with approximately 1.2 miles directly along the Ottauquechee River. The trailhead is conveniently located next to Woodstock's East End Park, which is 0.5 miles from The Green. The ORT has been made possible by the efforts of local volunteers and landowners combined with funding support from Woodstock's Economic Development Commission.



## **Two Phases To Universal Accessibility Grant Request Project:**

1. Universal Accessibility—Pages 2-4
2. Trailhead Beautification—Pages 5-6
3. Project Budget—Page 7

### **Universal Accessibility Phase**



ORT has been a huge success since its opening 18 months ago on Labor Day 2020. We're averaging 500 people using the trail each week. Along with the East End Park, ORT provides the foundation for economic growth in Woodstock's East End, which is a community priority. Most importantly, ORT provides a "flat" walking trail with great river access. Since its opening ORT has been embraced by the community and is now part of the fabric of Woodstock.

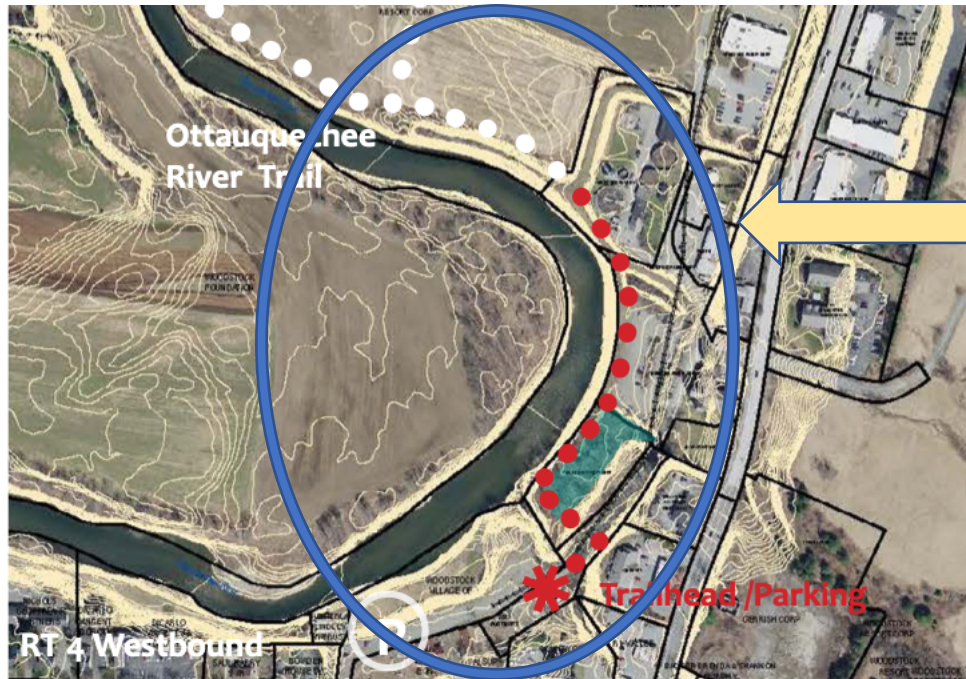
However, the ORT is not universally accessible. Those with mobility issues are not able to enjoy the beauty of the Ottauquechee River and/or the nature experience. There is a 12-foot drop at the trailhead that requires an ADA-compliant ramp. In addition, the trail surface is dirt with numerous tree roots protruding in sections.





The Ottawaquechee River Trail intends to make the first 0.3 miles of the 2.8-mile trail wheelchair accessible. To accomplish this improvement there are two main requirements:

- To construct an ADA-compliant ramp at the trailhead
- To resurface the 0.3 miles of trail with ADA compliant materials



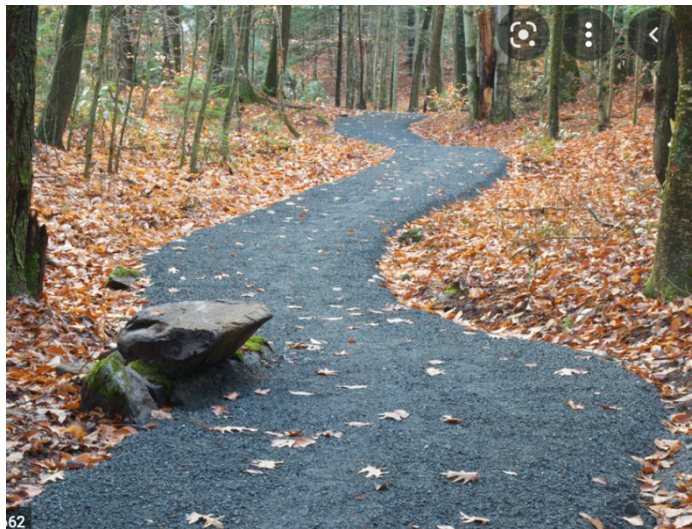
0.3 Mile Section of the Ottawaquechee River Trail to be made handicap accessible

**Trailhead Ramp:** There is a 12" drop from the trailhead to the elevation of the initial 0.3 miles of the ORT. Currently there is a set of stairs to enable people to access ORT. These stairs do not accommodate wheelchairs or strollers. Because of this, we will need to construct an ADA-compliant ramp at the trailhead. The cost estimate for this ramp is \$10,000, which is approximately 80% for equipment rental and 20% for materials.



We will construct the trailhead ramp following ADA guidelines. (<https://www.access-board.gov/ada/guides/chapter-4-ramps-and-curb-ramps/>).

**Trail Surface:** Currently the first 0.3 miles of the ORT is mainly dirt. This section of the trail is usable by walkers and those with strollers. However, the dirt does not accommodate wheelchairs. In addition, there is approximately 600 feet of tree roots marbled across the trail. A combination of gravel and gravel plus grating will be needed to upgrade this section of the ORT to wheelchair usage. The cost estimate for this trail surface upgrade is \$9,000, which is approximately 33% for equipment rental and 67% for materials.



In addition, we will be adding a railing to the existing stairs at the trailhead to aid people who are using the stairs for trail access.

Once the trail is resurfaced it will be mobility accessible by wheelchairs, walkers, strollers.....everyone will now be able to enjoy the first 0.3 miles of the Ottawaquechee River Trail.

<https://www.access-board.gov/aba/guides/>

<https://www.fs.usda.gov/sites/default/files/Accessibility-Guide-Book.pdf>

<https://www.wa-rock.com/ask-the-rock-how-do-i-make-a-gravel-surface-wheelchair-accessible/>



## Clearing of One-Acre Parcel



ORT has done much clearing of the trailhead and the corridor leading down to the river. However, this cleared space represents only a small fraction of the area of the one-acre parcel that houses the beginning of ORT.

As part of this project, ORT intends to hire a contractor to use equipment to

clear the remaining portion of the one-acre parcel. The vegetation remaining is principally invasives along with trees of little value. ORT has walked the property with the arborist/invasives expert at MBR National Park and he has offered this conclusion.

With the clearing, there is immediate benefit to all ORT users. The views from the trailhead to the Ottauquechee River are greatly enhanced. This will provide all with much more of an “aha” moment and should encourage everyone to proceed onto the trail with no hesitation.

We expect this part of the project will cost approximately \$4,000, which will all be paid through ORT fundraising efforts.

Beyond this benefit, ORT and the community could determine other uses for this one-acre parcel of land. This might include:

1. A few benches and a simple trail, which could provide for a quiet area for reflection
2. A play area for children
3. A series of outdoor exercise stations

ORT plans to work with MBR National Park along with other local organizations to replant the one-acre parcel with native bushes and trees. ORT volunteers would attempt to control the invasives.

## Trailhead Beautification



As can be clearly seen in this picture, ORT's trailhead is quite simple. We have a kiosk and a simple gravel walkway but not much else. This is quite a contrast to the extensive landscaping used by our neighbors at East End Park.

In this project, ORT intends to spruce up the trailhead a bit. We don't want to exactly match East End Park but we do intend to incorporate some of the finishes used. Key to our plans will be the use of stone

columns to decorate/define the stairs leading down to the river. Stone columns will also be used at the beginning of the ADA ramp that will provide universal accessibility.

In addition, we intend to have a stone bench in the trailhead area shown in the picture to further dress up the beginning of the trail.

This phase of the project is expected to cost \$2,600 for the stone materials, which will be paid through ORT fundraising efforts. The labor required for this part of the project will be provided by ORT volunteers.



## Project Budget

### Ottawaquechee River Trail--Universal Accessibility

**Project Budget:**

Developed December 2022  
 Work to be completed in 2023  
 Most of the construction work will be completed by ORT Volunteers

**Budget Elements:**

Universal Accessibility	Cost	Description
Upgrade Trail	\$ 10,050.00	Upgrade trail from existing condition to 9/16 hardpack Compacting Shimming base material as needed Adding drainage as needed
Switchback		Establish a 4' wide ramp down embankment at trailhead Proper slope to meet ADA requirements Add switchbacks as needed Path to be finished in 9/16 compacted hardpack Stumpgrinding as needed to enable grade changes/trail building
Railing	\$ 1,500.00	Wooden railing for stairs and boundary of ramp
<b>Labor</b>		
Foreman	\$ 1,700.00	Trail building and switchback
<b>Materials</b>		
Project materials	\$ 5,800.00	Hardpack Erosion Jute Hydroseed all exposed dirt areas
<b>Other</b>		
Allowance	\$ 1,000.00	Allowance for unforeseen circumstances
<b>Clearing/Beautification</b>		
Trailhead	\$ 2,000.00	Ongoing maintenance/labor provided by ORT volunteers
Clearing of 1 Acre Parcel	\$ 3,975.00	Brush grinding designated areas Remove standing dead hazard trees. Stumps cut flush. Oversized wood tucked on bank. Fixed tooth grinder. 8 ton excavator. Chainsaws, as needed.
Trailhead Stonework	\$ 2,600.00	4 stone columns Stone bench
<b>Total Budget</b>	<b>\$ 28,625.00</b>	
<b>EDC Grant</b>	<b>\$ 20,050.00</b>	<b>70.0%</b>
<b>Fundraising</b>	<b>\$ 8,575.00</b>	<b>30.0%</b>